

CAT.6A FTP Loaded Patch Panel

Shielded Patch Panel loaded with different CAT.6A Keystone Jack



CB-2013-24S



CB-1033T8C6A-FTP



CB-1047T8C6A-FTP

Order Information

Part Number	Description	Inner Box	Carton	Carton Measurement
CB-2013-24S	Unloaded 24 Port FTP Patch Panel	1PCS	10PCS	L51*W27*H26CM
CB-1047T8C6A-FTP	CAT.6A Shielded Toolless Keystone Jack, Slim	50PCS	500PCS	L57*W35*H32CM
CB-1033T8C6A-FTP	CAT.6A Shielded Toolless Keystone Jack	50PCS	500PCS	L57*3W5*H32CM

CAT.6A UTP Loaded Patch Panel

Unshielded Patch Panel loaded with different CAT.6A Keystone Jack



CB-2013-24P



CB-1033T8C6A

Order Information

Part Number	Description	Inner Box	Carton	Carton Measurement
CB-2013-24P	Unloaded 24 Port UTP Patch Panel	1PCS	10PCS	L51*W27*H26CM
CB-1033T8C6A	CAT.6A UTP Toolless Keystone Jack	50PCS	500PCS	L57*W35*H32CM



CB-2021-24P



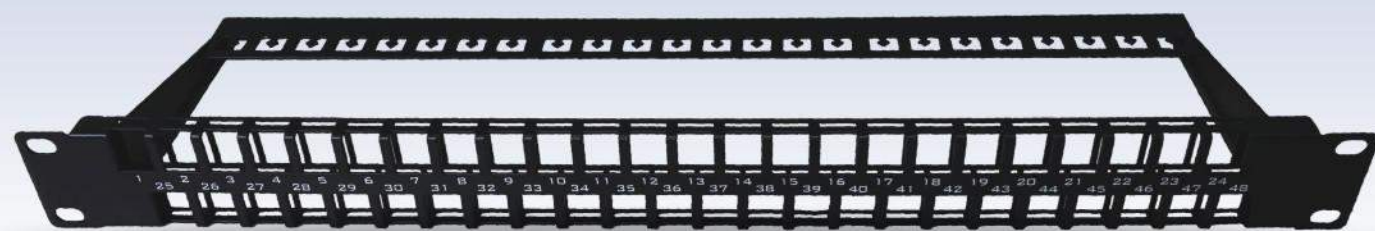
CB-1021D8C6A

Order Information

Part Number	Description	Inner Box	Carton	Carton Measurement
CB-2021-24P	Unloaded 24 Port Angle UTP Patch Panel	1PCS	10PCS	L55*W36*H27CM
CB-1021D8C6A	CAT.6A UTP 110 IDC & Krone IDC Keystone Jack	50PCS	500PCS	L57*W35*H32CM

CAT6A UTP Loaded Patch Panel

**Unshielded CAT6A Patch Panel
with CAT.6A Keystone Jack**



CB-2035-48P



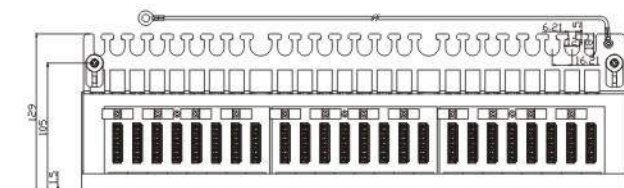
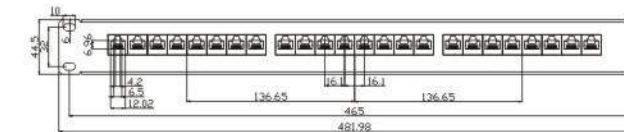
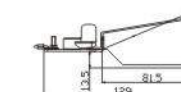
Order Information

Part Number	Description	Inner Box	Carton	Carton Measurement
CB-2035-48P	Unloaded 48 Port UTP Patch Panel	1PCS	10PCS	L55CM*W36CM*H27CM

CAT.6A Shielded Patch Panel



CB-2033K24C6A-FTP



Order Information

Part Number	Description	Inner Box	Carton	Carton Measurement
CB-2033K24C6A-FTP	CAT.6A 24 Port FTP Krone IDC Patch Panel	1PCS	10PCS	L55CM*W36CM*H27CM

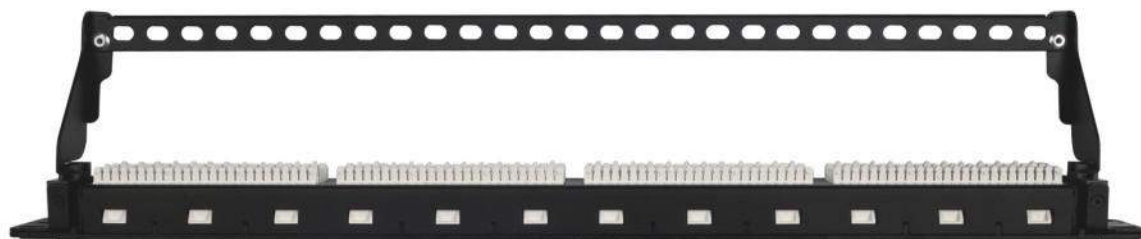
CAT.6A Unshielded Patch Panel



CB-2029H24C6A



CB-2029H24C6A



CB-2029H24C6A

Order Information

Part Number	Description	Inner Box	Carton	Carton Measurement
CB-2029H8C6	CAT.6 24 Port UTP 110 IDC Patch Panel	1PCS	10PCS	L53CM*W32CM*H23CM

CAT.6A Shielded Keystone Jack



CB-1043T8C6A-FTP



CB-1048H8C6A-FTP

90 Degree Toolless Type

Physical Characteristics

Jack Contact	phosphor bronze, 6-50 μ inch gold plated over nickel
IDC Contacts	100 μ inch nickel plated over phosphor bronze
PCB	FR-4 ,UL94V-0
Housing: Zinc Die Casting	

Electrical Characteristics

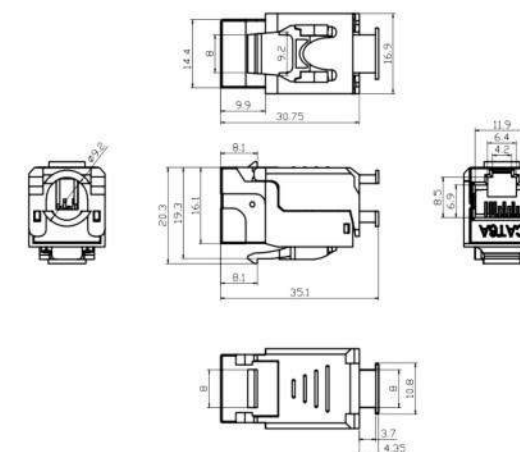
Dielectric Strength	1000V RMS for 1min
Current Rating	1.5Amp Max.
Insulation Resistance	10M Ω Min.
Contact Resistance	2m Ω per contact
Temperature Range	-10°C to 60°C
Humidity	10%~90%; non condensing
Insertion Life	>2000 mating cycles
IDC Accept	22-26 AWG Solid Cable

Applications

1000BASE-T Gigabit Ethernet
 100BASE-TX Fast Ethernet.
 10BASE-T Ethernet.

Voice, Video and other applications.

All the products are verified to the electrical characteristics required in the directive.



Order Information

Part Number	Description	Inner Box	Carton	Carton Measurement
CB-1043T8C6A-FTP	CAT.6A+ Shielded Toolless Keystone Jack	50PCS	500PCS	L57CM*W35CM*H22CM
CB-1048H8C6A-FTP	CAT.6A FTP 110 Keystone Jack	50PCS	500PCS	L57CM*W35CM*H22CM

CAT.6A Shielded Keystone Jack

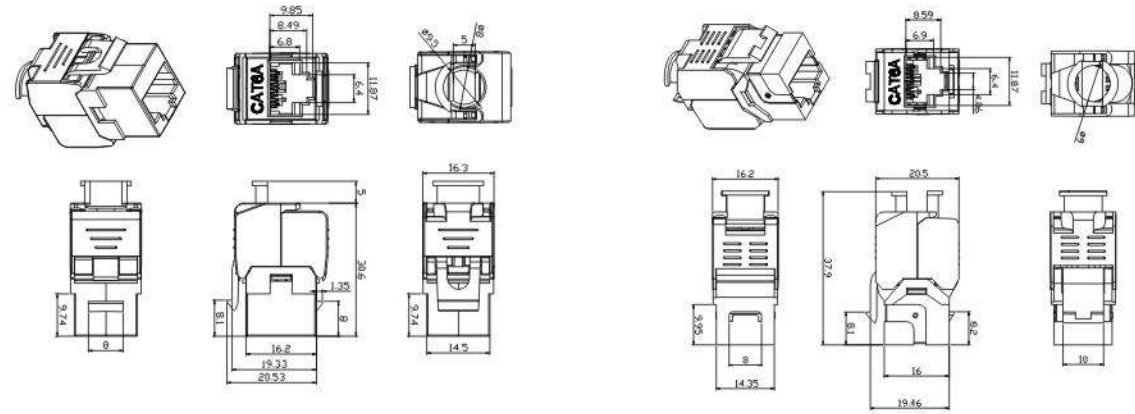
CAT.6A Unshielded Keystone Jack



CB-1041T8C6A-FTP



CB-1047T8C6A-FTP



Physical Characteristics

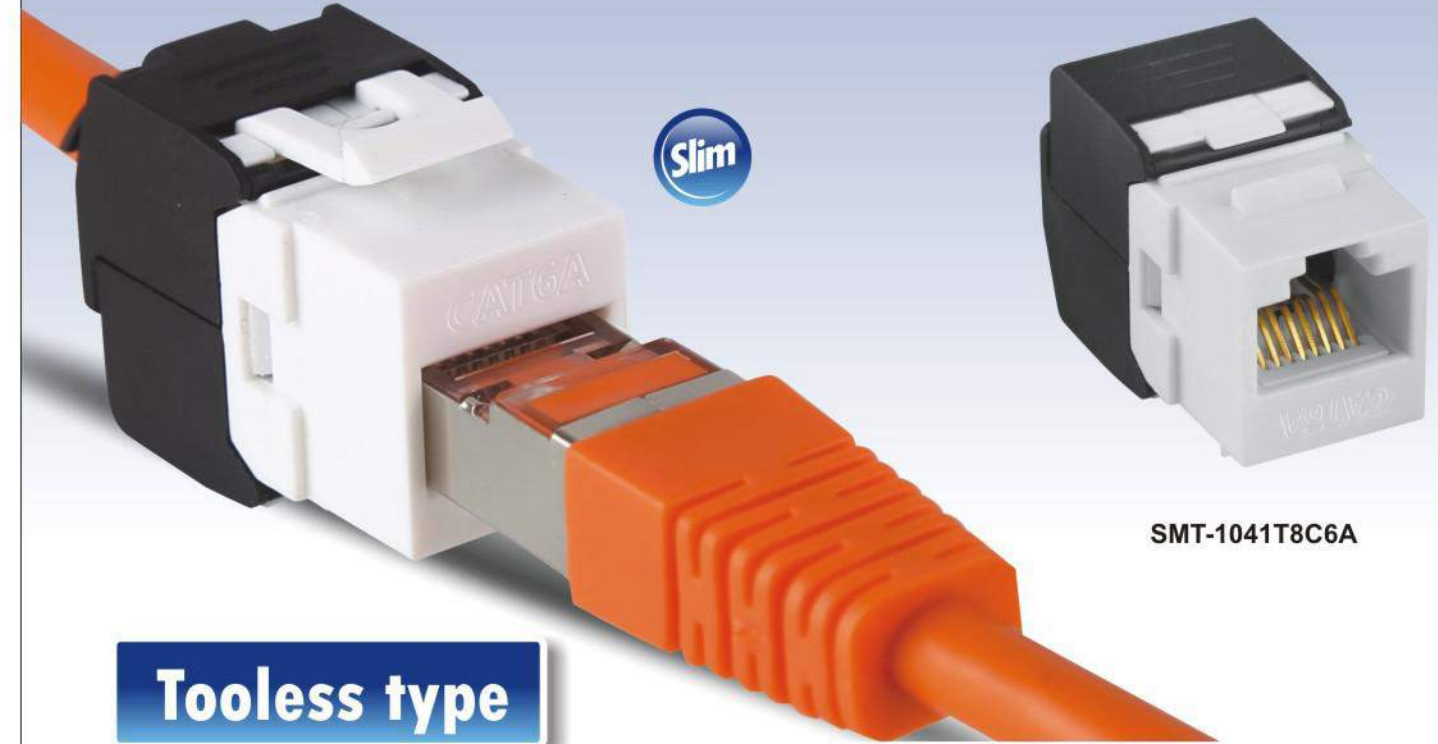
Jack	Phosphor bronze, 6-50µ inch gold plating over nickel in contact area
IDC	100µ inch nickel plated over phosphor bronze
Shielded Cover	50-60µ inch nickel plated over zinc alloy
PCB	FR-4 ,UL94V-0
Housing: Zinc Die Casting	

Electrical Characteristics

Dielectric Strength	1000V RMS for 1 min
Current Rating	1.5Amp Max.
Insulation Resistance	10MΩ Min.
Contact Resistance	2mΩ per contact
Temperature Range	-10°C to 60°C
Humidity	10%-90%; non condensing
Insertion Life	>2000 mating cycles
IDC Accept	22-26 AWG Solid Cable

Order Information

Part Number	Description	Inner Box	Carton	Carton Measurement
CB-1047T8C6A-FTP	CAT.6A FTP Tooless Keystone Jack, Slim	50PCS	500PCS	L57*W35*H32CM
CB-1041T8C6A-FTP	CAT.6A FTP Tooless Keystone Jack, Slim	50PCS	500PCS	L57*W35*H32CM



Tooless type

SMT-1041T8C6A



CB-1034T8C6A

Coupler



CB-1033T8C6A

Tooless

Order Information

Part Number	Description	Inner Box	Carton	Carton Measurement
CB-1041T8C6A	CAT.6A UTP Tooless Keystone Jack, Slim	50PCS	500PCS	L57*W35*H22CM
CB-1033T8C6A	CAT.6A UTP Tooless Keystone Jack	50PCS	500PCS	L57*W35*H22CM
CB-1034T8C6A	CAT.6A Coupler Keystone Jack	50PCS	500PCS	L57*W35*H22CM

CAT.6 Unshielded Patch Panel



CB-2026H24C6



CB-2022K24C6

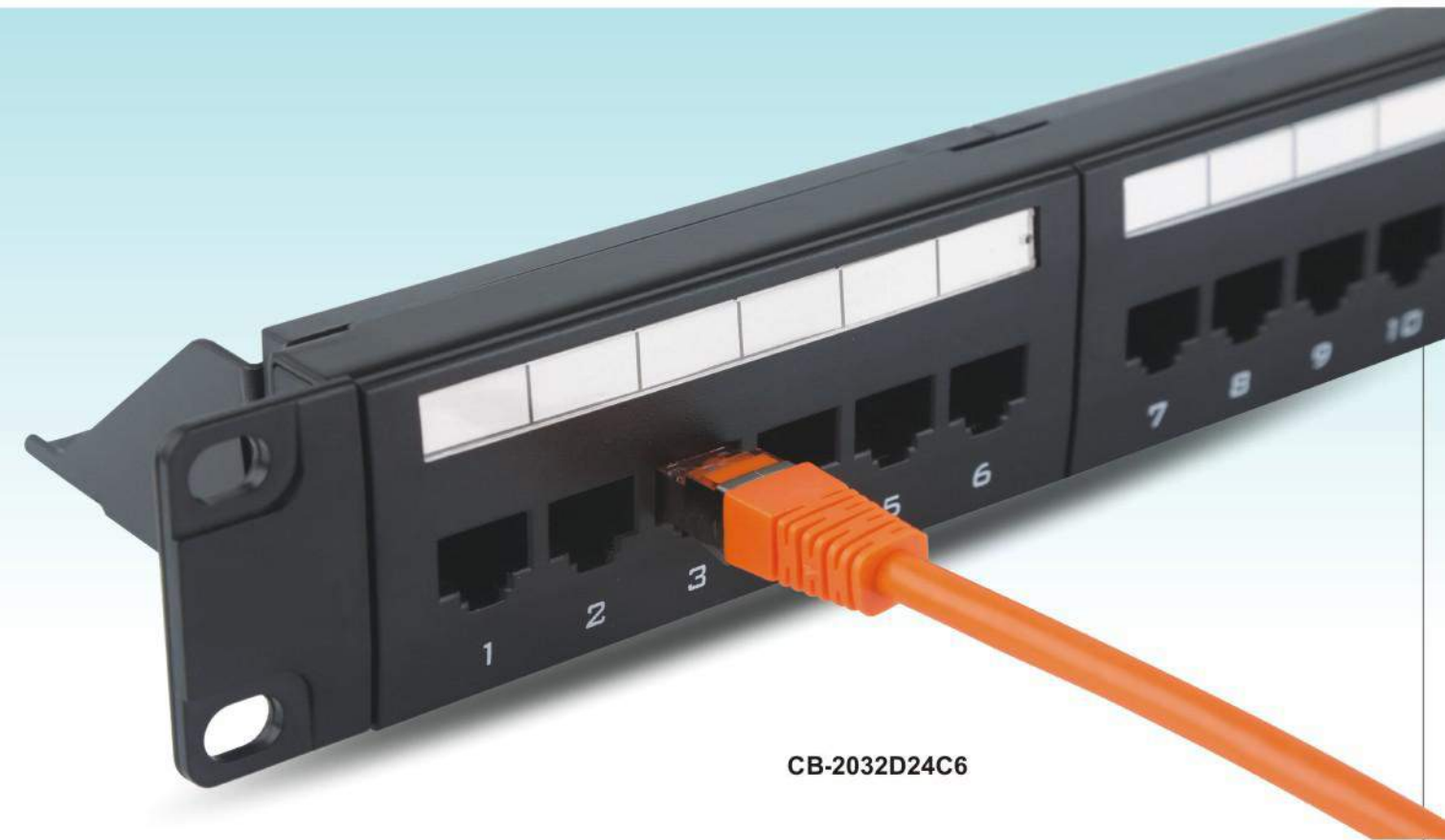


CB-2029H24C6

Order Information

Part Number	Description	Inner Box	Carton	Carton Measurement
CB-2029H24C6	CAT.6 24 Port UTP 110 IDC Patch Panel	1PCS	10PCS	L53*W32*H23CM
CB-2022K24C6	CAT.6 24 Port UTP Krone IDC Patch Panel	1PCS	10PCS	L53*W32*H23CM
CB-2026H24C6	CAT.6 24 Port UTP 110 IDC Patch Panel	1PCS	20PCS	L53*W32*H23CM

CAT.6 Unshielded Patch Panel



CB-2032D24C6



CB-2032D12C6



CB-2032D48C6

Order Information

Part Number	Description	Inner Box	Carton	Carton Measurement
CB-2032D24C6	CAT.6 24 Port UTP 110 IDC & Krone IDC Patch Panel	1PCS	10PCS	L53*W32*H23CM
CB-2032D48C6	CAT.6 48 Port UTP 110 IDC & Krone IDC Patch Panel	1PCS	10PCS	L53*W32*H23CM
CB-2032D12C6	CAT.6 12 Port UTP 110 IDC & Krone IDC Patch Panel	1PCS	20PCS	L53*W32*H23CM

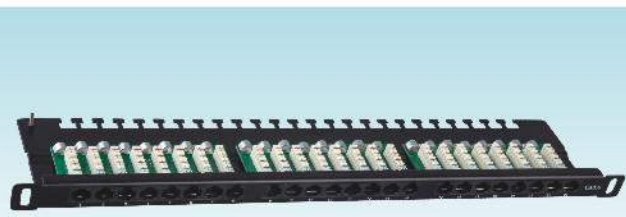
CAT.6 Unshielded Patch Panel



CB-2012D24C6
110 & Krone IDC



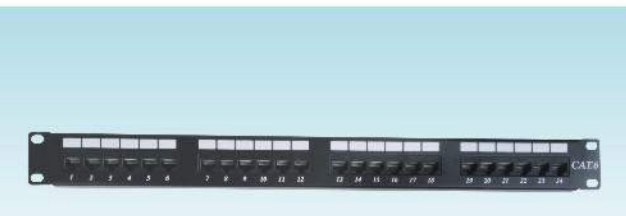
CB-2018H24C6
110 IDC



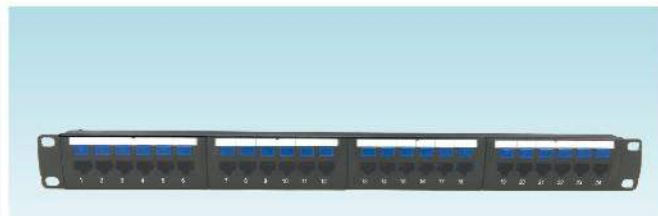
CB-2020K24C6
Krone IDC



CB-2020K48C6
Krone IDC



CB-2022D24C6
110 & Krone IDC



CB-2026H24C6
110 IDC

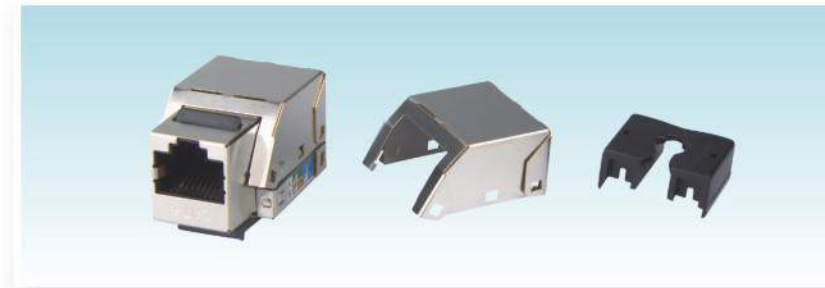


CB-2030K24C6
Krone IDC



CB-2034K24C6
Krone IDC

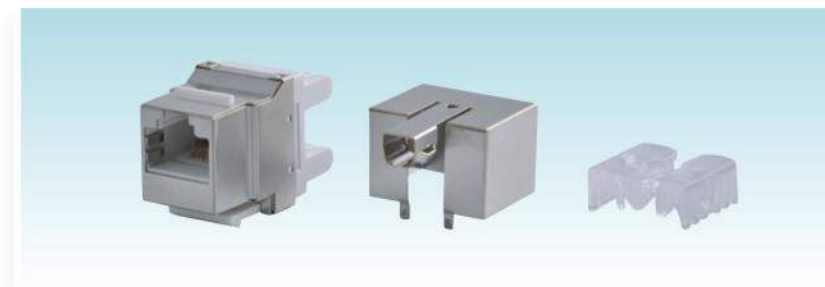
CAT.6 Shielded Keystone Jack



CB-1013H8C6-FTP



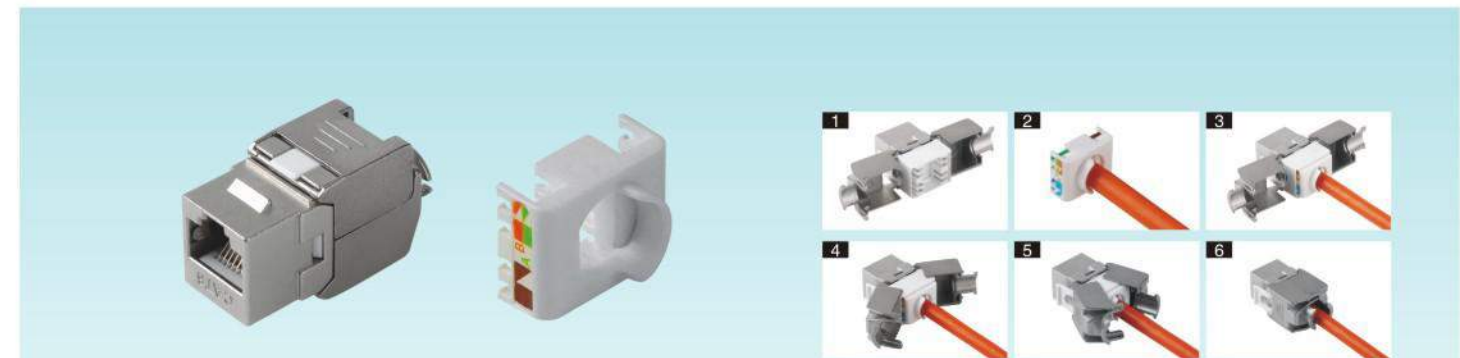
CB-1034T8C6-FTP



CB-1016D8C6-FTP



CB-1033T8C6-FTP



CB-1041T8C6-FTP

Order Information

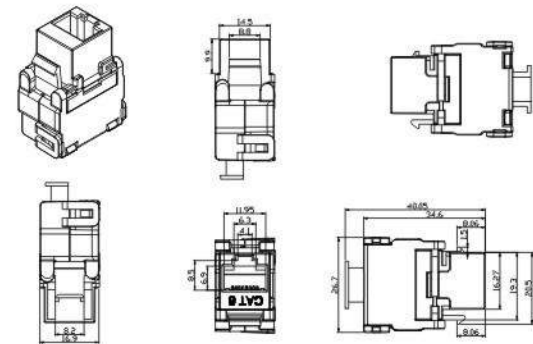
Part Number	Description	Inner Box	Carton	Carton Measurement
CB-1033T8C6-FTP	CAT.6 FTP Toolless Keystone Jack	50PCS	500PCS	L57*W35*H22CM
CB-1013H8C6-FTP	CAT.6 FTP 110 IDC Keystone Jack	40PCS	400PCS	L57*W35*H22CM
CB-1034T8C6-FTP	CAT.6 FTP Toolless Coupler	50PCS	500PCS	L57*W35*H22CM
CB-1041T8C6-FTP	CAT.6 FTP Toolless Keystone Jack, Slim	50PC	500PCS	L57*W35*H22CM
CB-1016D8C6-FTP	CAT.6 FTP 110 IDC & Krone IDC Keystone Jack	40PCS	400PCS	L57*W35*H22CM

CAT.6 Unshielded Keystone Jack

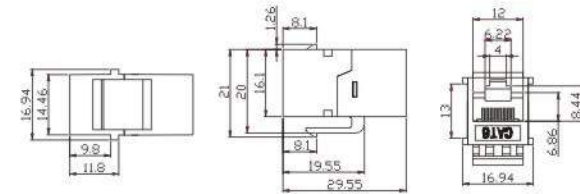
CAT.6 Unshielded Keystone Jack



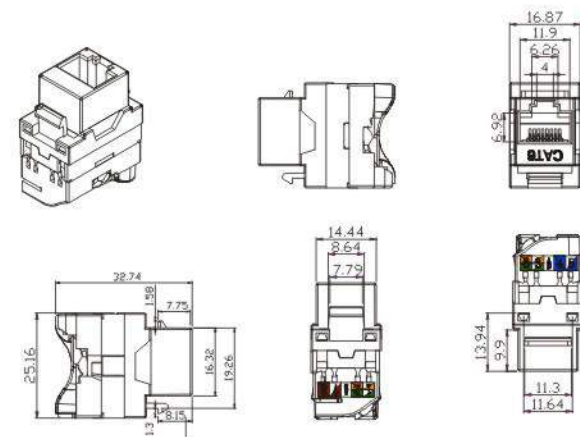
CB-1033T8C6



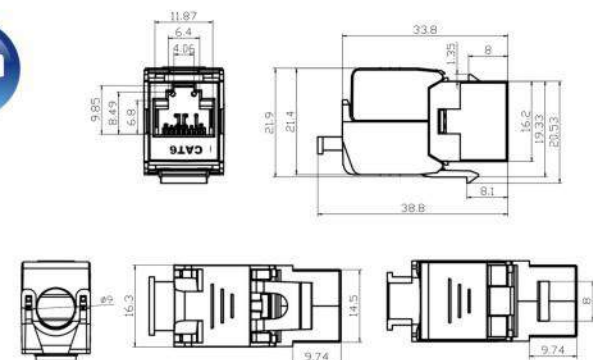
CB-1034T8C6



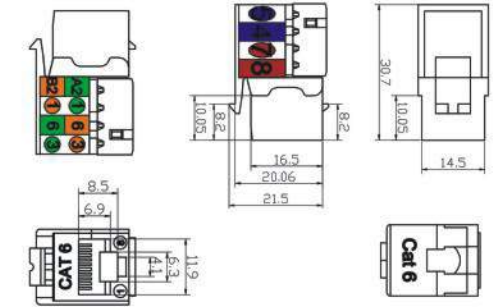
CB-1042X8C6



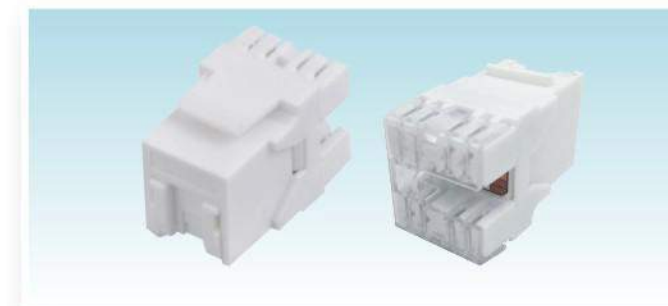
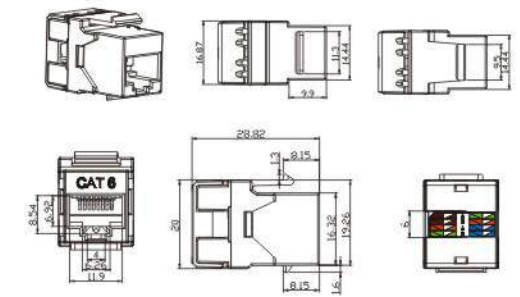
CB-1041T8C6



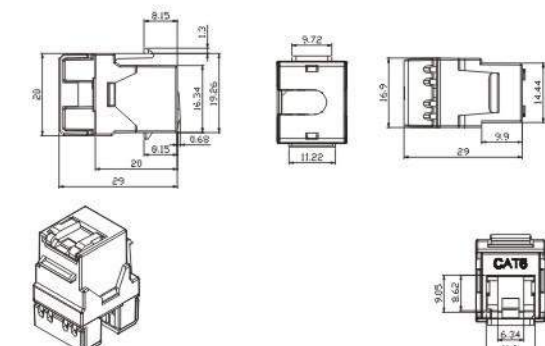
CB1014H8C6



CB-1021D8C6



CB-1021D8C6(B)



CAT.6 Unshielded Keystone Jack



CB-1021D8C6-AU
110 & Krone IDC



CB-1013H8C6
110 IDC



CB-1016D8C6
110 & Krone IDC



CB-1018H8C6
110 IDC



CB-1019K8C6
Krone IDC



CB-1020H8C6
110 IDC



CB-1022T8C6
Toolless



CB-1027D8C6
110 & Krone IDC



CB-1028T8C6
Toolless



CB-1040K8C6
Krone IDC

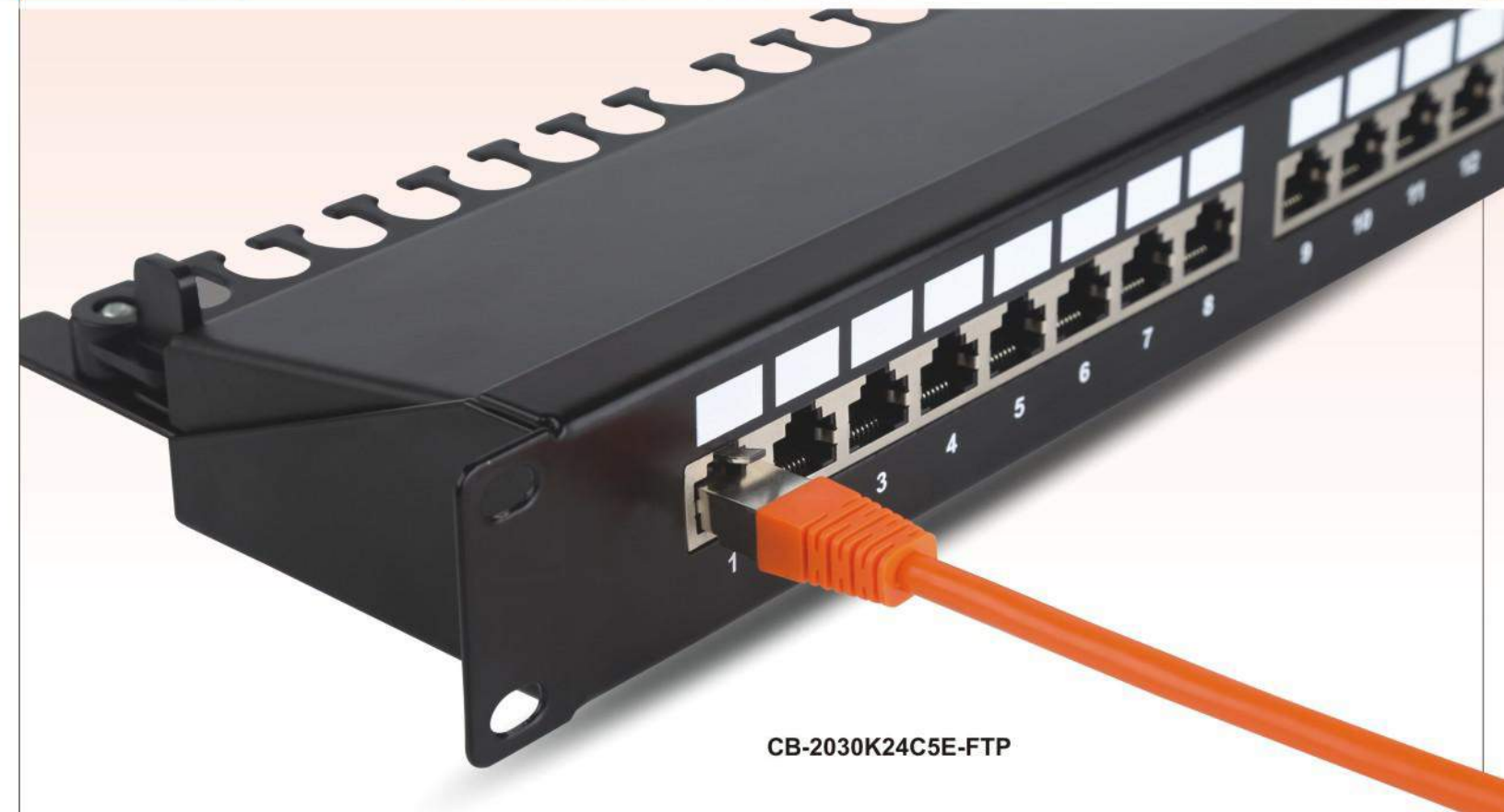


CB-1035K8C6
Krone IDC



CB-1021H8C6
110 IDC

CAT.5E Shielded Patch Panel



CB-2030K24C5E-FTP



CB-2020K24C5E-FTP



Technical Details

Electrical:

Current Rating: 1.5 Amps
Insulation Resistance: 500 M ohms(MIN)
Contact Resistance: 20m ohms(Max)
DC Resistance: 0.1 ohm MAX

Mechanical Specification:

IDC Punch Down Cycle: >250 mating cycles
Rj45 Insertion Life: >750 mating cycles
IDC Accept: 22-26 AWG Solid Wire

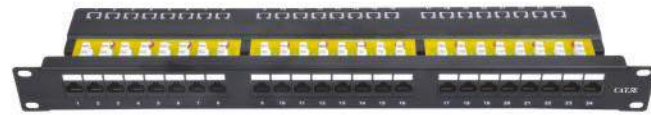
Material:

Panel: 1.5mm thickness metallic panel/RAL 9005
Spring: Phosphor Bronze with gold-painted (3U~50U) over nickel-painted.
IDC Contact: Phosphor Bronze with Tin-painted
Plastic: PC

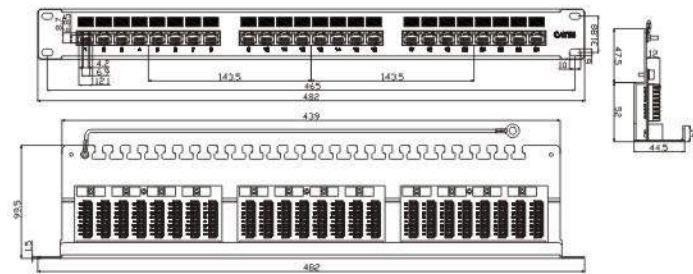
Order Information

Part Number	Description	Inner Box	Carton	Carton Measurement
CB-2020K24C5E-FTP	CAT.5E FTP Krone IDC Patch Panel	1PCS	10PCS	L53*W32*H23CM
CB-2030K24C5E-FTP	CAT.5E FTP Krone IDC Patch Panel	1PCS	10PCS	L55*W36*H27CM

CAT.5E Unshielded Patch Panel



CB-2030K24C5E



CB-2012D48C5E



CB-2020K48C5E



CB-2020K24C5E



CB-2026H24C5E

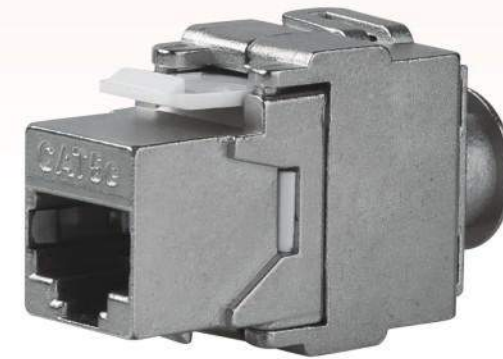


CB-2032D24C5E



CB-2032D48C5E

CAT.5E Shielded Keystone Jack



CB-1033T8C5E-FTP



CB-1041T8C5E-FTP



CB-1013H8C5E-FTP



CB-1016D8C5E-FTP

Order Information

Part Number	Description	Inner Box	Carton	Carton Measurement
CB-1033T8C5E-FTP	CAT.5E FTP Toolless Keystone Jack	50PCS	500PCS	L57*W35*H22CM
CB-1041T8C5E-FTP	CAT.5E FTP Toolless Keystone Jack	50PCS	500PCS	L57*W35*H22CM
CB-1016D8C5E-FTP	CAT.5E FTP 110 IDC & Krone IDC Keystone Jack	40PCS	400PCS	L57*W35*H22CM
CB-1013H8C5E-FTP	CAT.5E FTP 110 IDC Keystone Jack	40PCS	400PCS	L57*W35*H22CM

CAT.5E Unshielded Keystone Jack

Voice Patch Panel



CB-1014H8C5E
110 IDC



CB-1013H8C5E
110 IDC



CB-1033T8C5E
Toolless



CB-1016D8C5E
110 & Krone IDC



CB-1018H8C5E
110 IDC



CB-1037K8C5E
Krone IDC



CB-1021D8C5E(B)
110 & Krone IDC



CB-1021D8C5E
110 & Krone IDC



CB-1041T8C5E
Toolless IDC



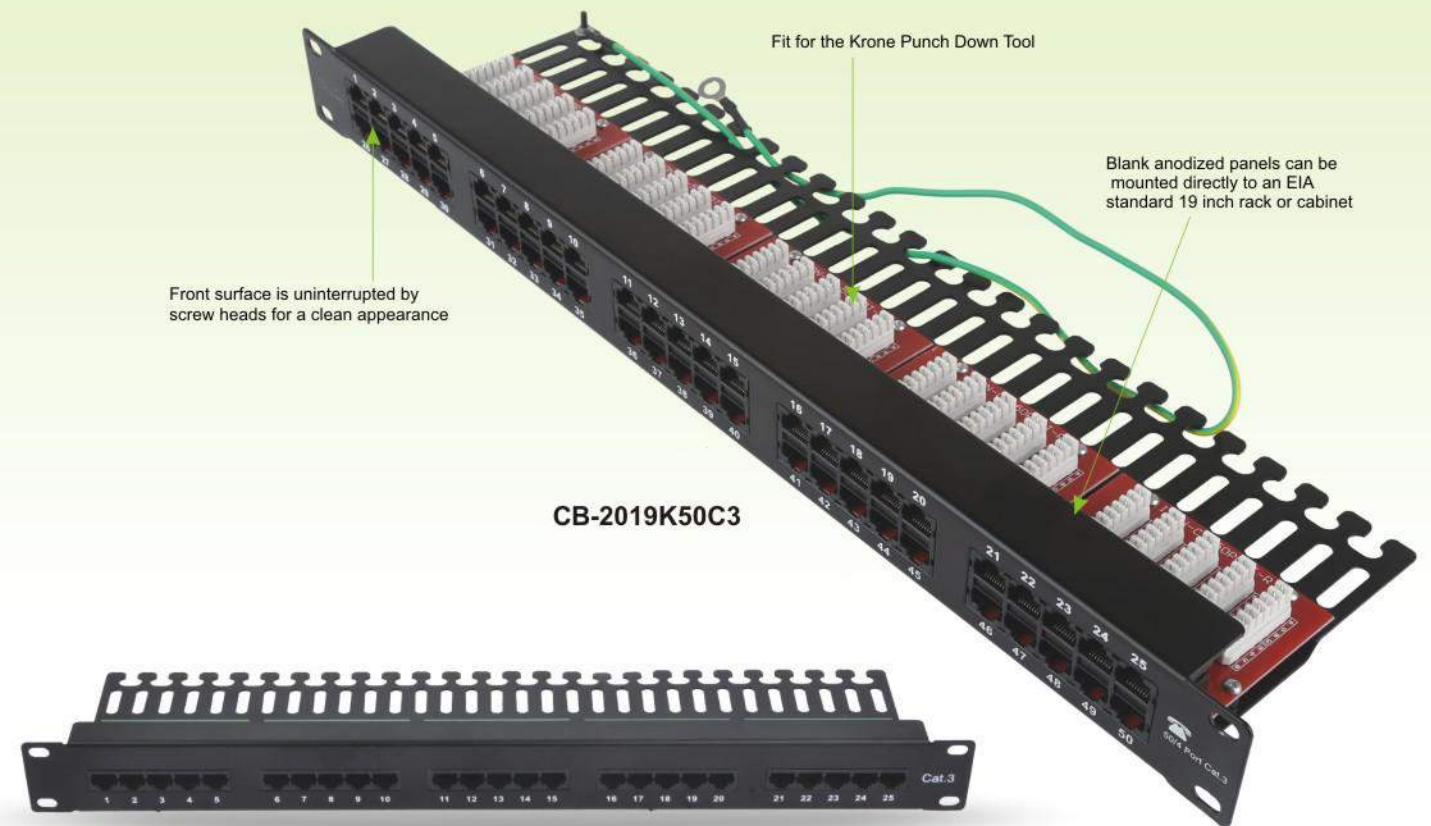
CB-1012T8C5E
Toolless



CB-1017T8C5E
Toolless



CB-1034T8C5E
Toolless



CB-2019K50C3

CB-2019K25C3

Products Description

CB's voice patch panels are the perfect solutions for bring voice to your cable rack, pre-configured in 25 and 50 port densities and designed specifically for voice grade application.

Features and Benefits

- Design to mount to any standard 19" rack or cabinet
- Space saving, high-density 1U
- 110 & Krone punch down tools are available
- Phosphor bronze with 3-50 micro inches gold plated
- Metal sheet: Corrosion resistant steel
- Plastic: Fire self-extinguish high-impact plastic

Installment Instruction



Insert each wire into the appropriate channel



Terminate wires using CB tool (SMT-303) or equivalent



Check and ensure each wire in correct slot



Insert the jack into the correct mounting location properly

Order Information

Part Number	Description	Inner Box	Carton	Carton Measurement
CB-2019K25C3	CAT.3 25 Port Krone IDC Patch Panel	1PCS	10PCS	L55*W36*H27CM
CB-2019K50C3	CAT.3 50 Port Krone IDC Patch Panel	1PCS	10PCS	L55*W36*H27CM

86 Type Faceplate



Order Information

Part Number	Description	Outer Dimension (L * W)(MM)
CB-4318AP-86-1P	1 Port Faceplate	86*86
CB-4318AP-86-2P	2 Port Faceplate	86*86
CB-4318AP-86-3P	3 Port Faceplate	86*86
CB-4318AP-86-4P	4 Port Faceplate	86*86
CB-4320AP-86-1P	1 Port Faceplate	86*86
CB-4320AP-86-2P	2 Port Faceplate	86*86
CB-4320AP-86-3P	3 Port Faceplate	86*86
CB-4320AP-86-4P	4 Port Faceplate	86*86

Germany Type Faceplate



Order Information

Part Number	Description	Outer Dimension (L * W)(MM)	Inner Dimension (L * W)(MM)
CB-4308-80F-1X	One Port Germany Bevelled Faceplate	80*80	50*50
CB-4308-80F-2X	Two Port Germany Bevelled Faceplate	80*80	50*50
CB-4308-80F-3X	Three Port Germany Bevelled Faceplate	80*80	50*50
CB-4309-80F-HC6A	CAT.6A FTP Wall Outlet, Horizontal Insertion	80*80	50*50
CB-4309-80F-VC6A	CAT.6A FTP Wall Outlet, Vertical Insertion	80*80	50*50
CB-4309-80F-HC6	CAT.6 FTP Wall Outlet, Horizontal Insertion	80*80	50*50
CB-4309-80F-VC6	CAT.6 FTP Wall Outlet, Vertical Insertion	80*80	50*50
CB-4013-80D	80*80*40 Back Box	80*80*40	

French Type Faceplate



CB-4316



CB-4311



CB-4312

Order Information

Part Number	Description	Outer Dimension (L * W)(MM)
CB-4316-45-1P	Single Port Faceplate	45*45
CB-4316-45-2P	Dual Port Faceplate	45*45
CB-4316-80F	FTP Frame	80*80
CB-4316-86F	FTP Frame	86*86
CB-4311-45-1P	Single Port Flat Faceplate	45*45
CB-4311-45-2P	Dual Port Flat Faceplate	45*45
CB-4312-45-2P	Dual Port Angled Faceplate	45*45

French Type Faceplate



CB-4316-45C6
CAT6 45X45 Faceplate



CB-4315-45C5E
CAT5E 45X22.5 Faceplate



CB-4315-45C6ND
CAT6 45X22.5 Faceplate



CB-4316-45C6ND
CAT6 45X45 Faceplate



CB-4315-45C3
CAT6 45X22.5 Faceplate



CB-4316-45C3
CAT3 45X45 Faceplate

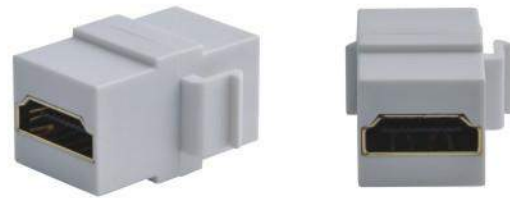
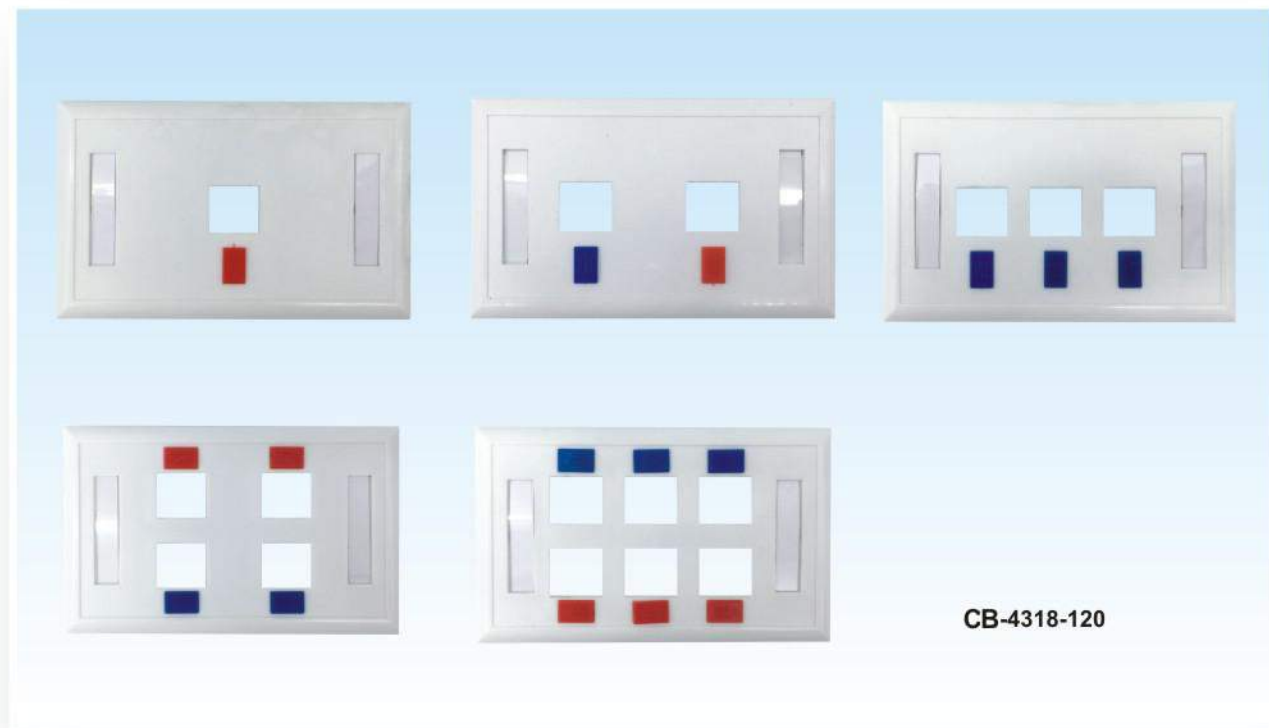


CB-4315-BK
45X22.5 Blank

Technical Details

45x45mm/45x22.5mm Faceplate Jack
Material: Fireproof PC.UL94V-0
Color: pure white
LSA IDC
With matched frame & back box

US Type Faceplate

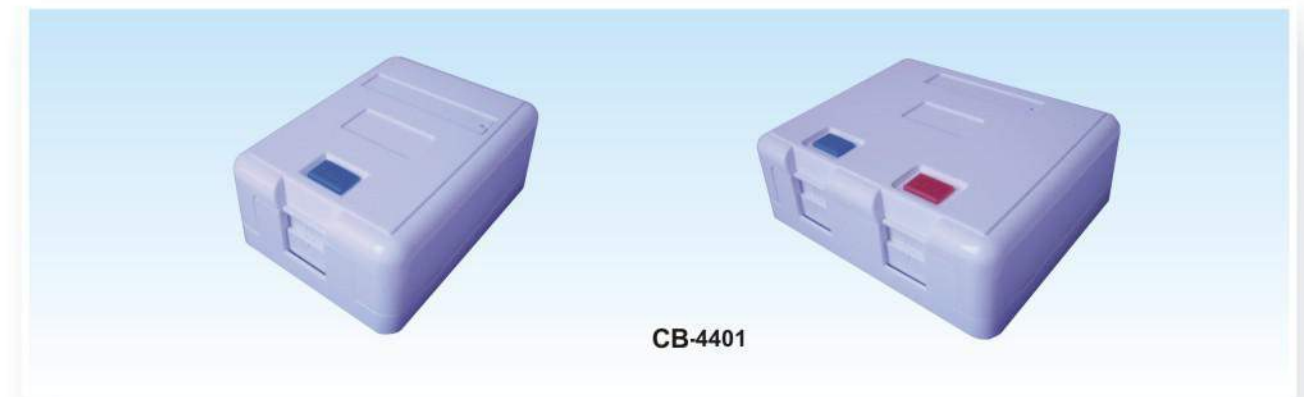


CB-HDMI-F01

Order Information

Part Number	Description	Outer Dimension(L*W)(MM)
CB-4318-120-1P	1 Port American Faceplate	114*70
CB-4318-120-2P	2 Port American Faceplate	114*70
CB-4318-120-3P	3 Port American Faceplate	114*70
CB-4318-120-4P	4 Port American Faceplate	114*70
CB-4318-120-6P	6 Port American Faceplate	114*70
CB-HDMI-F01	HDMI-Connector	-*-

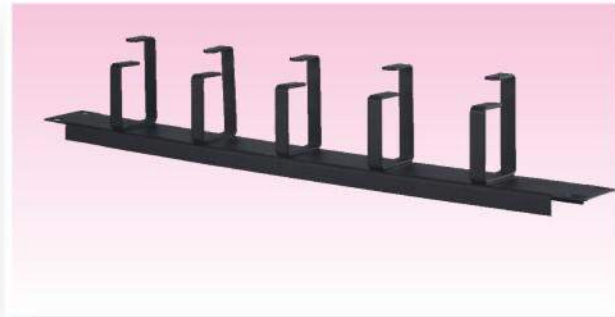
Surface Mount Box



Order Information

Part Number	Description	Outer Dimension(L*W)(MM)
CB-4401-1P(B)	1 Port Shuttered Surface Mount Box, Without Jack	65*48*26
CB-4401-2P(B)	2 Port Shuttered Surface Mount Box, Without Jack	76*65*26
CB-4402-1PC6	CAT.6 UTP 1 Port Surface Mount Box, With PCB	60*42*26
CB-4402-2PC6	CAT.6 UTP 2 Port Surface Mount Box, With PCB	60*67*26
CB-4402-1PC5E	CAT.5E UTP 1 Port Surface Mount Box, With PCB	60*42*26
CB-4402-2PC5E	CAT.5E UTP 2 Port Surface Mount Box, With PCB	60*67*26
CB-4402-1PC6-FTP	CAT.6 FTP 1 Port Surface Mount Box, With PCB	60*42*26
CB-4402-2PC6-FTP	CAT.6 FTP 2 Port Surface Mount Box, With PCB	60*67*26

"For routing and bundling cable on standard 19" rack, makes a complete cable management system when used with vertical and horizontal cable managers



CB-3010-5P
D-rings Cable Manger



CB-3010-12P
12 Rings Metal Cable Manager



CB-3010-25P
25 Rings Metal Cable Manger



CB-3010-24P
24 Rings Metal Cable Manger

Technical Details

- Mounts Horizontal on Standard 19" Cabinet.
- Material: CRS
- Color: Black



CB-3010-12S
12 Ring Plastic Cable Manager

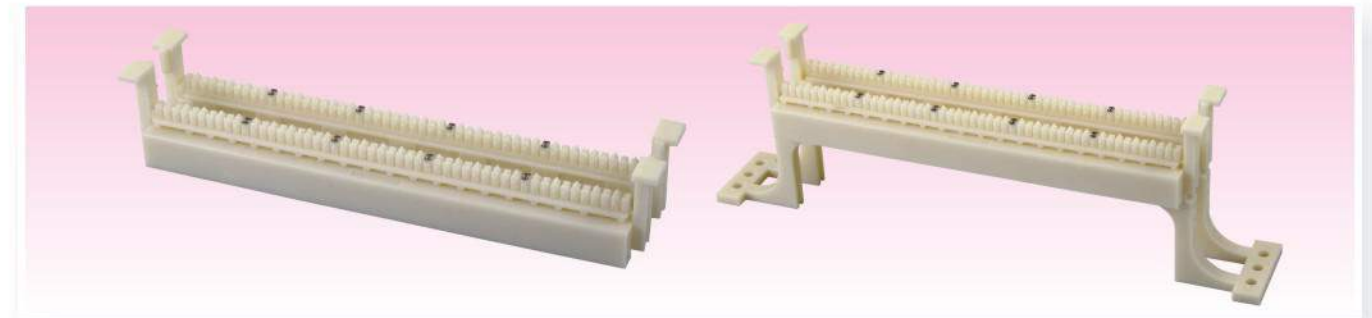
Order Information

Part Number	Description	Dimension (W * D)(MM)	Installation Size(MM)
CB-3010-5P	D-rings Metal Cable Manager	483*44	464
CB-3010-12P	12-Rings Metal Cable Manager	483*44	464
CB-3010-25P	25-Rings Metal Cable Manager	483*44	464
CB-3010-24P	24-Rings Metal Cable Manager	483*44	464
CB-3010-12S	12 Ring Plastic Cable Manager	483*44	464



Technical Details

- Mounts Horizontal on Standard 19" Cabinet.
- 100 Pairs



Technical Details

- With Legs Or Without Legs
- 50 Pairs

Order Information

Part Number	Specification
CB-3009D-100P	100 Pairs 100 Wiring Block
CB-3009D-50P	50 Pairs 100 Wiring Block
CB-3009A-50P	50 Pairs 100 Wiring Block with legs

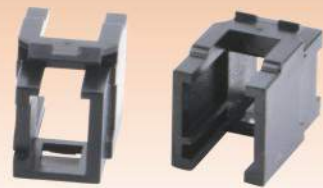
Fiber Patch Panel



CB-2201-24P



CB-PP-BK

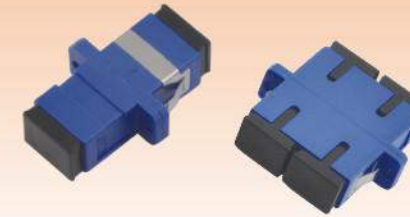


CB-PP-SC



CB-PP-ST

Fiber Adapter & Cable



SC Adapter



ST Adapter



FC Adapter



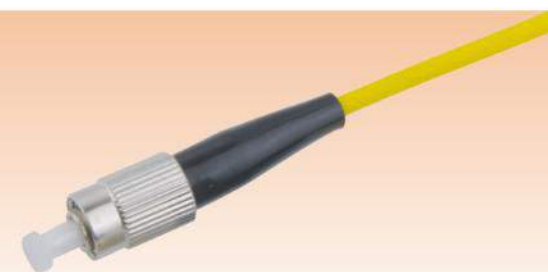
LC Adapter



SC Cable



ST Cable



FC Cable



LC Cable

Fiber Optic Faceplate

Fiber Optic Mount Box



CB-4307SC-1P

CB-4307SC-2P

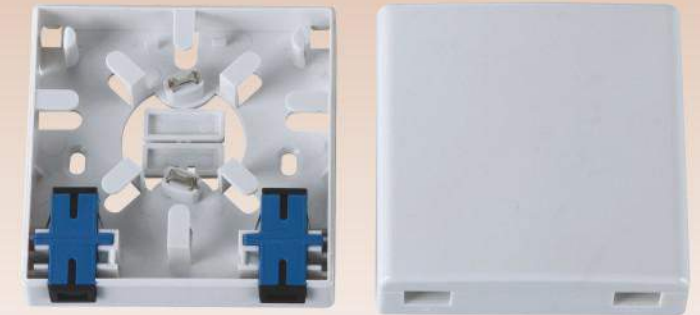
CB-4307ST-2P

Technical Details

- Housing: High-impact Flame Retardant Plastic

Order Information

Part Number	Description
CB-4307SC-86-1P	86 x 86 Flat Faceplate fit for SC connector, One Port
CB-4307SC-86-2P	86 x 86 Flat Faceplate fit for SC connector, Two Port
CB-4307ST-86-2P	86 x 86 Flat Faceplate fit for ST connector, Two Port



CB-4307SC-86D

Description

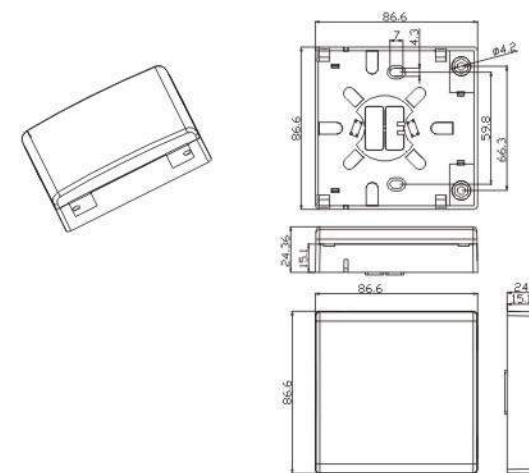
- HTB is made of engineering plastic.
- HTB could be installed on the wall, and it is dust-proof & insect-proof.
- Compatible with $\Phi 2.0-3.0$ mm pigtail & 3.0 mm x 2.0mm indoor drop cable, cable can be led from up, down left and right and back side of the box.
- Dimension is 86x86x24.5(LxWxH)mm

Technical Details

- Compatible with SC adapters and field assembly connector.
- Fiber capacity is 2fibers.
- Compatible with fusion splicing and mechanical splicing to connect the fiber.
- Compact size, with enough space to store the fiber.
- Wall mounting and desktop installation.
- FTTx applications

International Standards

- Comply with EN 60950-1, IEC 60529, IEC 62134-1, ITU.TL.51, Telcordia GR-1209-Core, Telcordia GR-1221-Core, UL94 etc international standards and GB/T 2423, GB/T 3873, GB/T 9286, GB 4208 etc China national standard.



Network Tools



CB-302 **Cable Stripper** (122mm)

Products Description

The cable stripping tool is designed to reduce the time required to prepare both coaxial and twisted-pair cable for termination. The tool includes an adjustable cutting blade, which is specially designed to accurately strip the jacket from 4-pair cable without damaging the conductors.



CB-303 **Insertion Tool** (185mm)

Products Description

Krone insertion tools are suitable for clamp modules designed to help reduce fatigue when trimming wire or seating connection blocks to the wiring base.



CB-304 **Multi-pair 110 Style Impact Tools** (108mm)

Products Description

The 110 5-pair impact tool is designed to seat 110 connecting blocks and terminate and cut UTP cable on 110 wiring blocks. Saving time and money, it makes large termination jobs small by greatly reducing the number of punch cycles. Cartridge is adjustable to cut/no-cut position and terminates 22-26AWG solid and stranded wires with single insulation. Tool also has twist and lock head.



CB-305 **Single Pair 110 Style Impact Tools** (180mm)

Products Description

The 110 single-pair impact tool is designed to seat 110 connecting blocks and terminate and cut cable on 110 wiring blocks. Saving time and money, the tool features an easy way to hold, ergonomically designed handle that helps reduce fatigue when trimming wire or seating connection blocks to the wiring base.



CB-306 **RJ45 and RJ11 Crimp Tools** (192mm)

Products Description

This high-quality ratcheting crimp tool is designed to crimp and cut quickly the wires of the RJ45 connector. The parallel action design maintains accurate alignment of the die with the plug for a precision crimp every time.



CB-307 **Punch Down Tool** (185mm)

Products Description

It is suitable for connecting cables modules and distribution frames. Various products make the job more convenient. Specially-made tool head ensures durability. Combination hook.



CB-301 **RJ 45 & RJ 11 Cable Tester**

Products Description

Available for RJ 45 (UTP/STP) and RJ11 modular cables.



CB-308 **Punch down tool** (155mm)

Products Description

Use on telecom terminal block.



CB-309 **Dual-Modular Plug Crimp, Strip & Cut tool** (192mm)

Products Description

Straight motion & professional type, provide precise operation with key way in 8P modular holder. Modular holders are made of AL-ZN Alloy, light weight & durable. Suitable for both stranded & solid wire. (UTP/STP) Ratchet: YES.



CB-310 **Ways Modular Tool: Crimp, Strip & Cut** (200mm)

Products Description

Steel frame, hardened & black oxide finished, light weight & durable. Deluxe type, w/guide for operation. An additional locker for storage after work.



CB-311 **Dual-Modular Plug Crimp, Strip & Cut Tool** (185mm)

Products Description

Deluxe type, frame is made of steel, light weight, compact & durable w/key way in 8P modular holder. Ratchet: YES.



CB-312 **Easy Stripper for UTP / STP Telecom Wire** (89mm)

Products Description

For stripping wire diameter 5-6.2mm. Top end for 110/88 type insertion use.

Rj45 Male Connector



CB-5004M8C5E
CAT. 5E UTP Connector



CB-5004M8C5E-FTP
CAT. 5E FTP Connector



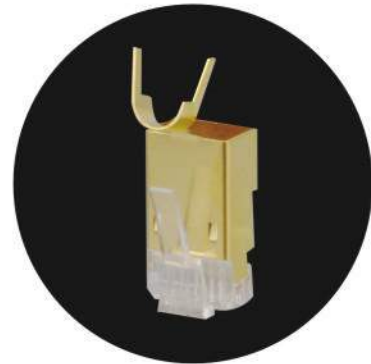
CB-5005M8C6
CAT. 6 UTP Connector



CB-5005M8C6-FTP
CAT. 6 FTP Connector



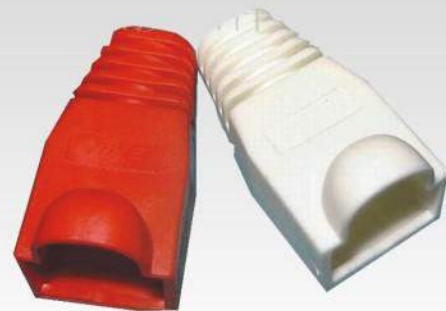
CB-5006M8C6A-FTP
Silvery CAT. 6A FTP Connector



CB-5007M8C6A-FTP
Golden CAT. 6A FTP Connector



CB-HT01C6
Boot



CB-HT01C5E
Boot